



Space2Earth Accelerator

An Open Innovation Event Series



We believe Space can do more for Earth

WHY SPACE?

The New Space sector is a fast-growing market, boosting the historical institutional Space exploration programs into commercial applications. The roughly \$366 billion global space industry (2019) is estimated to surge to over \$1 trillion by 2040.

SPACE FOR THE UN SDGS

As the New Space economy is accelerating, Space applications, such as Earth Observation and geo-location, increasingly play a key role when it comes to monitor, understand and tackle global challenges, such as climate change and resource management.

OUR MISSION

Space4Impact wants to maximize the positive impact of space technologies by linking New Space companies to new markets in line with the UN SDGs worldwide.



Gaetan Petit, PhD
General Manager



Nina Walker
Head of
Operations



Manuel Gerold
Business Development
Lead

SPACE2EARTH ACCELERATOR 2022

In February 2022 Space4Impact will kick-off its first international acceleration programme for downstream space applications bringing together space startups and strategic partners across industries.

GET READY FOR LIFT-OFF!



Running February – June 2022 in Switzerland & UK



Three industry events showcasing real case scenarios

1. Agriculture & Supply Chain
2. Insurances & Utilities
3. Sustainable Finance



Closing event to showcase the outcome of the programme

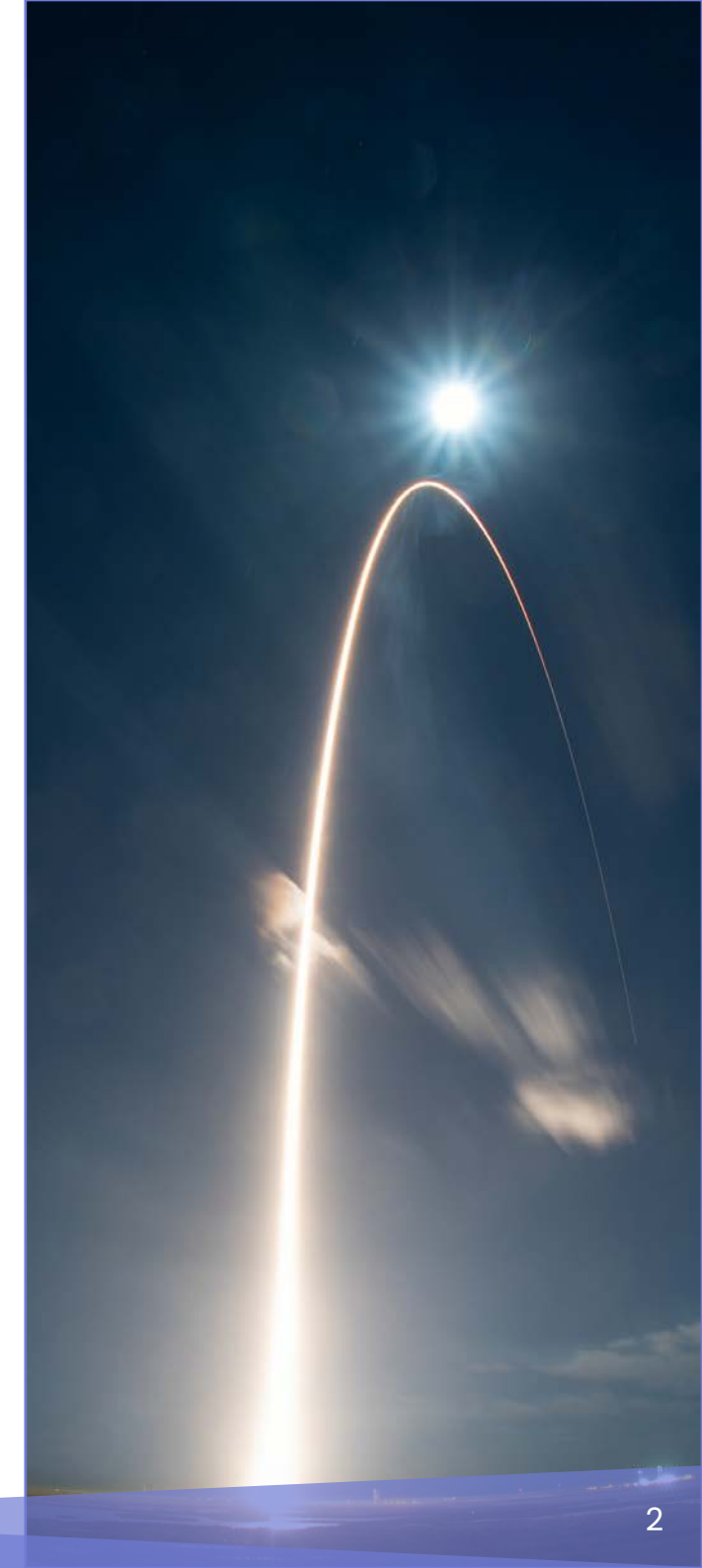


International startups presenting industry-tailored pitches



Startup mentors & experts to help enter new markets

Supported by:



OPEN INNOVATION EVENT SERIES



Space2Earth Accelerator

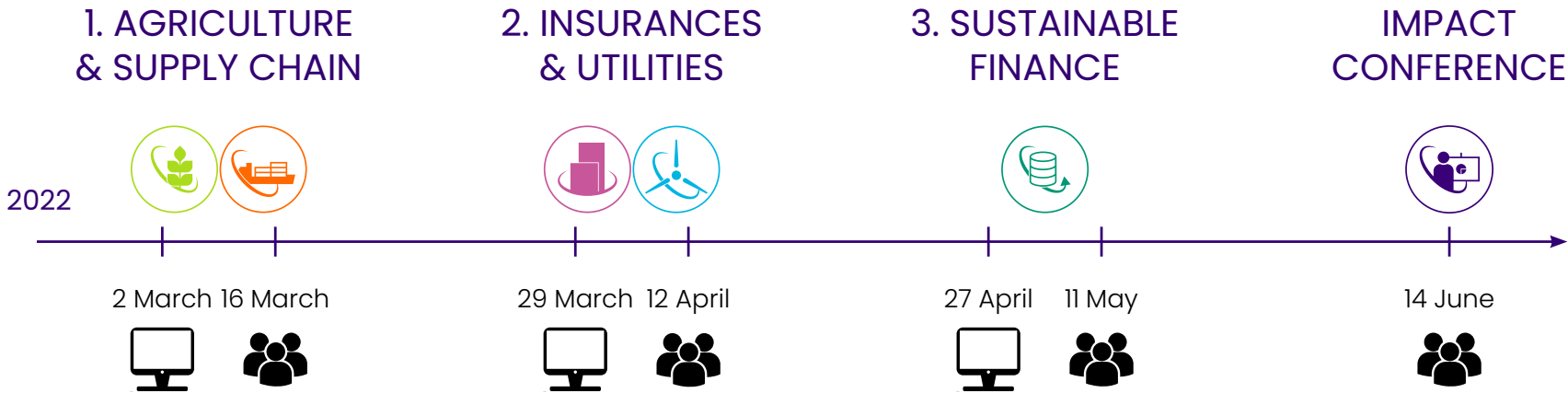


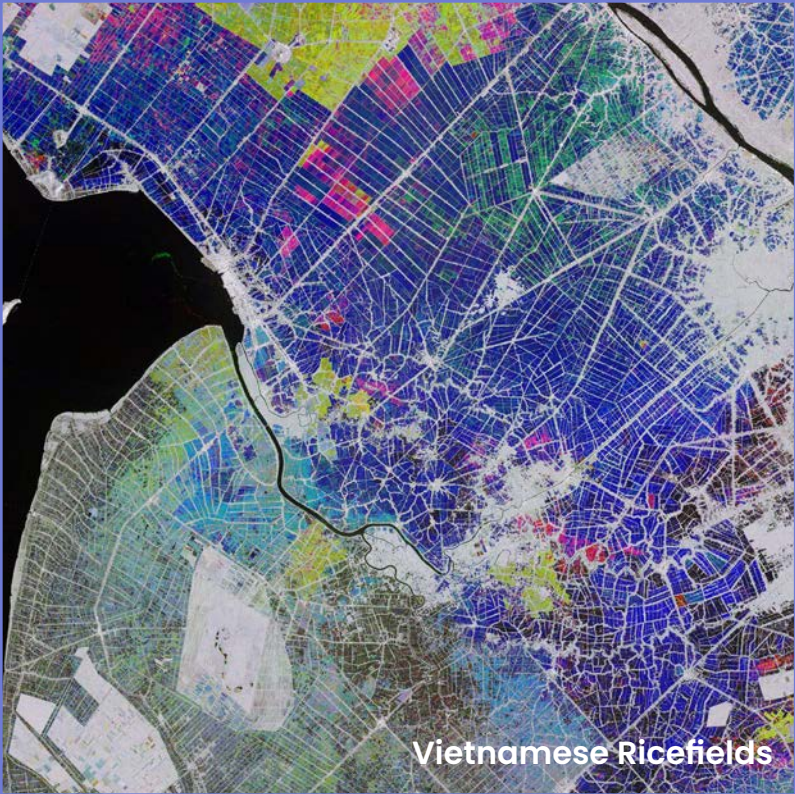
EVENT SERIES TIMELINE

During 3 industry events the Space2Earth Accelerator will introduce the technology of top-notch space startups to your industry.
Different from other programmes, you will share your industry’s challenges and needs. Then the startups will actively tackle them with their tailor-made solutions.

For this, the accelerator follows a unique structure (detailed explanation on p. 8), consisting of:

- an online pre-event to tackle the need of the industry; and
- a physical main event to pitch the solutions of the startups.





Vietnamese Ricefields



Rotterdam Port

INDUSTRY EVENT 1 AGRICULTURE & SUPPLY CHAIN



2nd March 2022 online

16th March 2022 EHL Campus Lausanne – Switzerland

This event will provide you with insights on how satellite data can give you real time information about your agriculture operations, such as soil conditions, crops yield and livestock monitoring, and help monitor your logistics with a global coverage, from the harvest to the store.

PRECISION & SMART FARMING



Earth Observation and remote sensing instruments onboard the satellites can measure the soil quality, its water intake, need for fertilizer and growth of crops.

GLOBAL GOODS MONITORING



Earth Observation, IoT and navigation satellites can track containers or trucks on a global scale in real time and ensure specific conditions, such as the cold chain.

INDUSTRY PARTNERS:



INDUSTRY EVENT 2 INSURANCES & UTILITIES



29th March 2022 online

12th April 2022 Swiss Aeropole, Vaud – Switzerland

This event will provide you with insights on how past and real time data from satellites can be used by insurances, energy generators, and infrastructure providers, by monitoring and forecasting parameters such as urbanization, vegetation, snow melt, landslides, flooding and forest fires.

NATURAL DISASTER MANAGEMENT



Earth Observation and remote sensing instruments can take images or measure the thermal signature of areas that are difficult to access and assess during natural disasters.

MONITORING INFRASTRUCTURE



By looking at time series or real time satellite images, you can assess the status of your infrastructure, monitor the environment around assets, or predict energy production.

INDUSTRY PARTNERS:



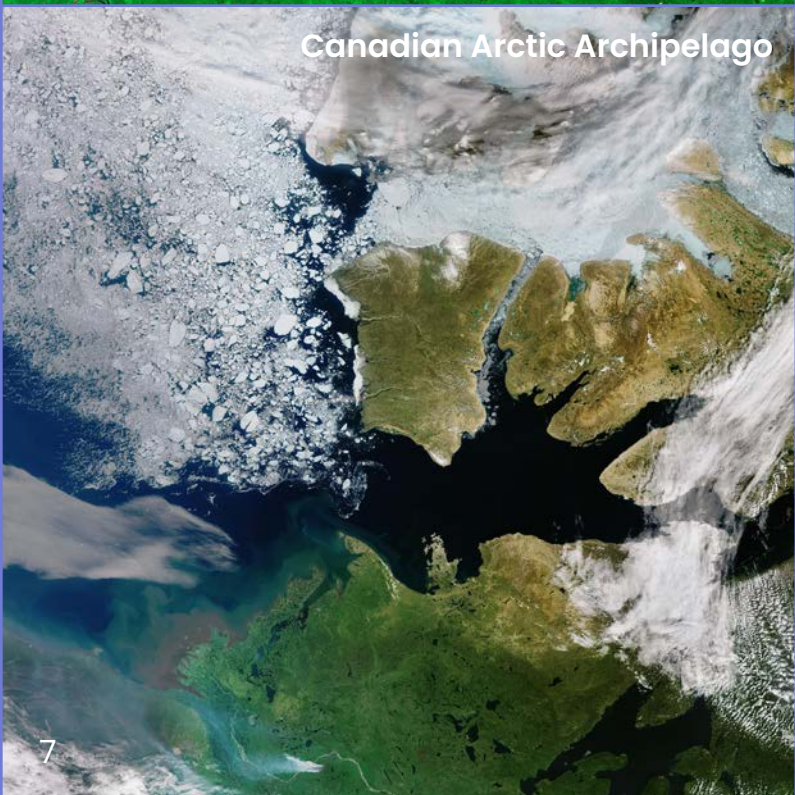
Wildfires in Greece



Laizhou Bay



Amazon Rainforest



Canadian Arctic Archipelago

INDUSTRY EVENT 3 SUSTAINABLE FINANCE

27th April 2022 online

11th May 2022 Guildhall, London - United Kingdom

This event will provide you with insights on how satellite imaging provides an objective measure of impact on our planet, offering the financial sector crucial support to move to a more green and sustainable future.



ESG REPORTING



Along the 2050 net zero race, impact and ESG reporting are playing an increasingly important role for investment and operation management. Earth Observation and remote sensing can provide unbiased and comparable measurements that can help to assess risk and create guidelines. Examples are monitoring of industrial processes' emissions, loss of biodiversity, or deforestation and forest health for CO2 compensation.

INDUSTRY PARTNERS:

S&P Global



INDUSTRY EVENT STRUCTURE

Each of the 3 themes will be addressed within two events.

First, a digital pre-event as a first contact, to clarify your industry challenges.

Second, a physical main event at which the startups will present a tailored pitch addressing your specific needs and where you will be able to talk about concrete solutions together.

ONLINE EVENT - DEFINE YOUR INNOVATION CHALLENGES



- Location: online; Duration: 2 hours
- Pre-event two weeks prior to the physical event
- Pitch your needs to the startups (5 min per company)
- Q&A session

PHYSICAL EVENT - DISCOVER THE STARTUPS' SOLUTION



- Location: physical; Duration: 5 hours - 1-6 PM (including a tour of the local ecosystem - not mandatory)
- Tour of the local ecosystem (2 hours)
- Present your company (30 min - 5 min per company)
- Listen to the startup solutions (1.5 hour - 10 min per startup)
- Speed dating and networking session for all participants (1 hour)



CLOSING EVENT

14th June 2022 EPFL STCC, Vaud – Switzerland

IMPACT CONFERENCE



This event in collaboration with the E4S Tech4Impact Showcase invites keynote speakers on the topic of space and sustainability. To conclude the accelerator program, the event features panel discussions with the participants of the accelerator to review their takeaways of the program. Furthermore, event invites investors with a space, sustainability, or deep tech background to follow the pitches of the startups on their space solutions.

STARTUP COHORT 2022



Space2Earth
Accelerator



STARTUP MAP 1

11 Countries, 19 Startups



STARTUP MAP 2

Events & Applications

INSURANCES & UTILITIES



- Real estate
- Meteo forecast
- Earth movement
- Harvest insurance
- Pipeline monitoring
- Urban development
- Traffic management
- Thermal loss monitoring
- Natural disaster management
- Remote areas communication
- Energy production management
- Infrastructure & assets monitoring



AGRICULTURE & SUPPLY CHAIN

- Precision agriculture
- Natural resources & shipment tracking
- Soil composition & moisture
- Draughts management
- Logistics optimization
- Water management
- Trading forecasting
- Yields optimization
- Mine composition
- Crops monitoring



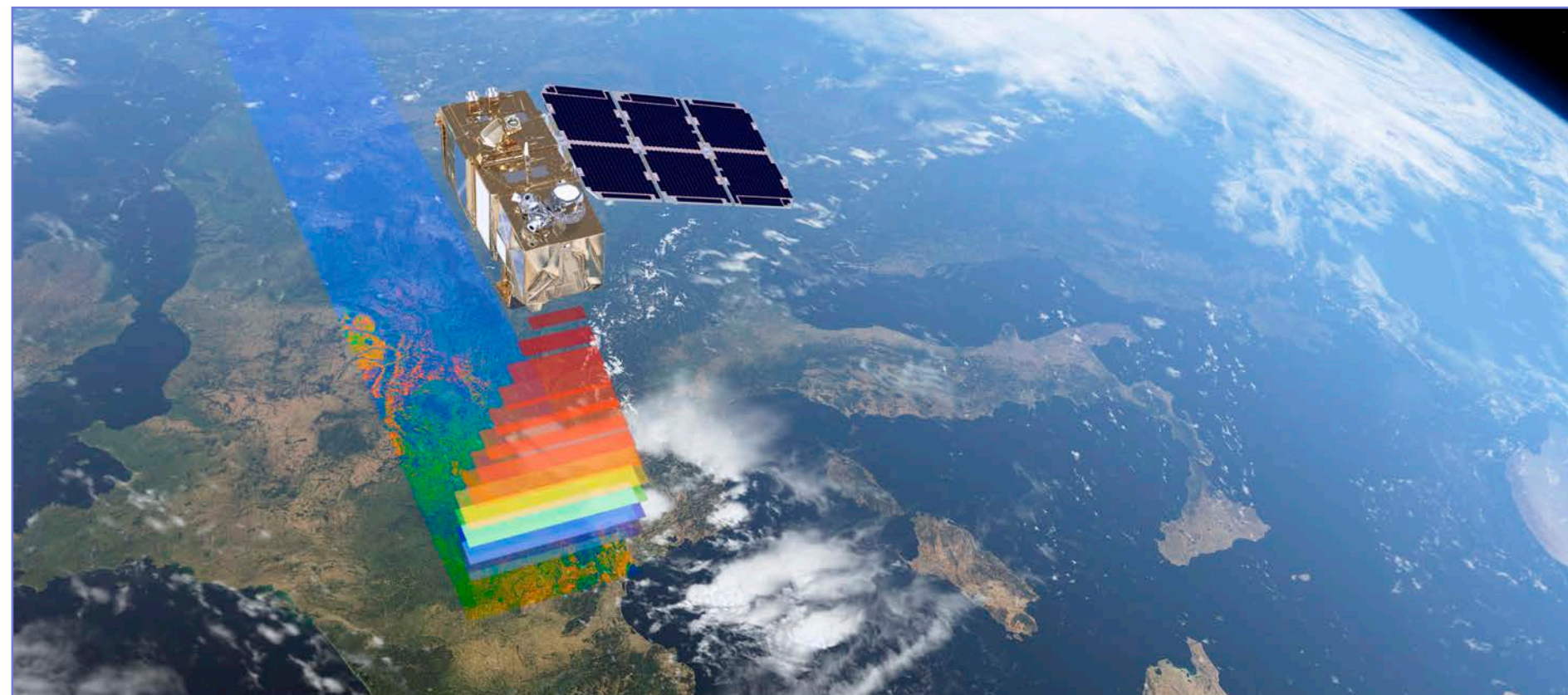
SUSTAINABLE FINANCE

- ESG reporting
- TCFD reporting
- Emissions monitoring
- Forestry management
- Vegetation monitoring
- Investment due diligence
- Carbon capture monitoring
- Climate change monitoring
- Impact Investment monitoring
- Infrastructure environmental impact

BECOME AN INDUSTRY PARTNER



Space2Earth
Accelerator



YOUR BENEFITS

OPEN INNOVATION

Access the latest cutting edge technology from space startups to boost your innovation and launch pilot projects.

ACTIVE PARTICIPATION

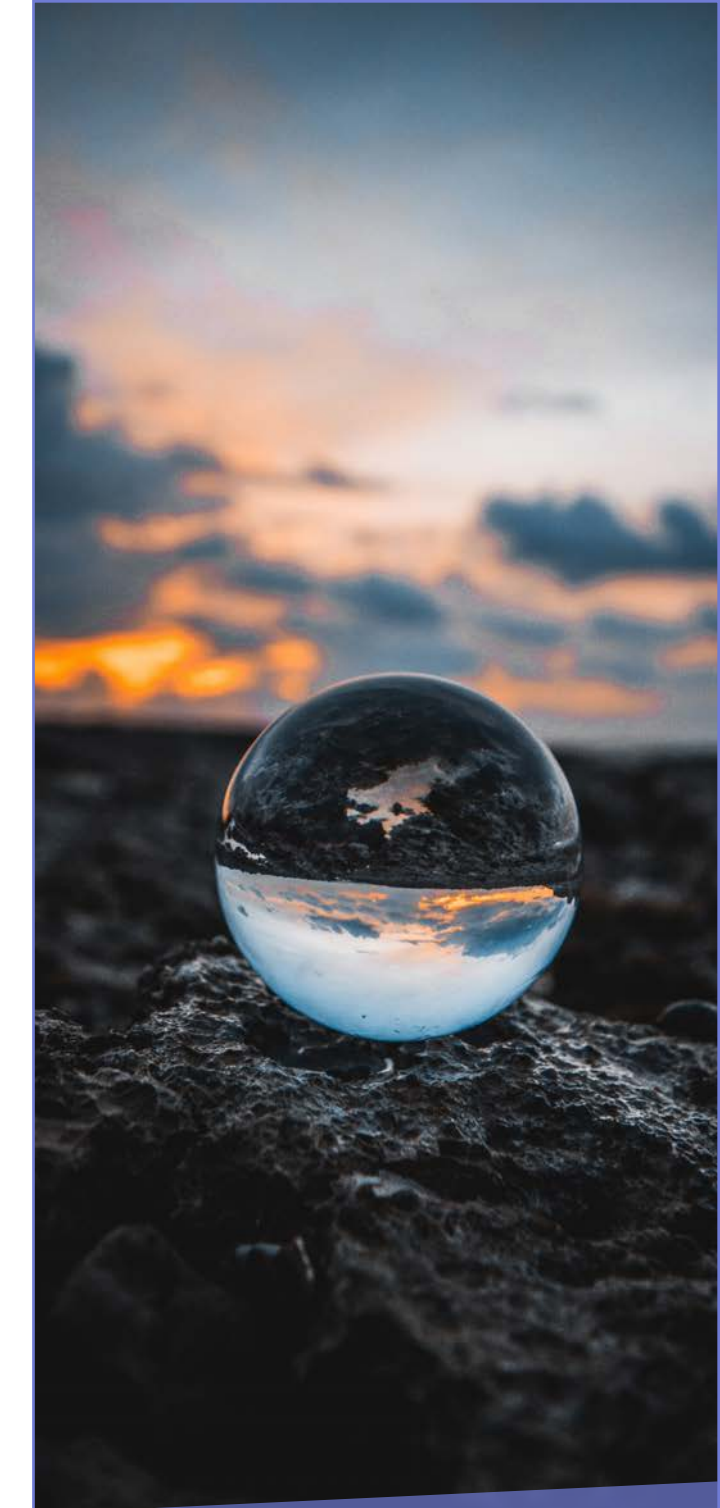
Present your challenges to an audience of selected start-ups & start discussions on concrete solutions at the event.

VISIBILITY & LOGO PRESENCE

Present your company during the event with a presentation and your own booth. Benefit from the presence of your logo on the brochure, screen and website.

NETWORKING

Meet relevant actors in your industry and connect to space experts during our networking session at the industry day and the closing event.



PACKAGES FOR INDUSTRY PARTNERS

	Industry events to attend	Tickets per event	Activity during industry event	Logo presence event	Logo presence website	Tickets for closing event	Add-On
DISCOVER Free	1	2	Attend & state a challenge	Logo presence on screen, brochure p. 2	Yes	2	Speech at the conference CHF 3'000
COLLABORATE CHF 4'000	1	2	Attend	Logo presence on screen, brochure p. 1	Yes	4 + booth	
DEEP DIVE CHF 8'000	3	2	Attend	Logo presence on screen, brochure p. 1	Yes	4 + booth	

CONTACT

Space4Impact
EPFL Innovation Park
Building C
1015 Lausanne

info@space4impact.org
space4impact.org/space2earth

Images & Icons © Space4Impact, ESA – CC BY-SA 3.0 IGO, Unsplash, The Noun Project



